



Global Telematics,
Just Easier

Tutorial: Fuel Monitoring Reports

How to use fuel-related reports

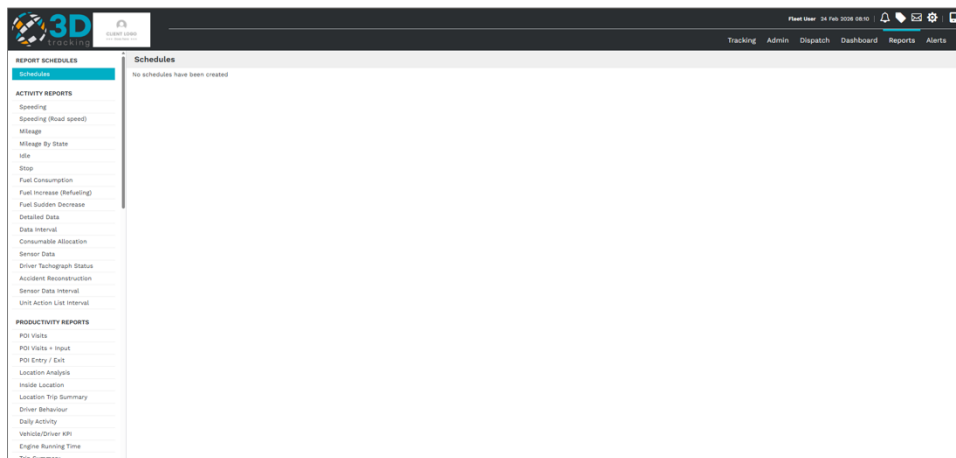
This guide shows you how to access and use fuel-related reports on the 3Dtracking platform, helping fleet managers monitor fuel transactions, verify refueling, detect sudden drops, and reduce fuel-related costs and risks.

What Fuel Reports Can Do

The platform provides a variety of **fuel monitoring reports** designed to give you **deeper insights** into how fuel is used across your fleet.

These reports help you:

- Track fuel transactions with precision
- Identify unusual fuel activity
- Reduce waste and unauthorized usage
- Improve reporting accuracy across teams

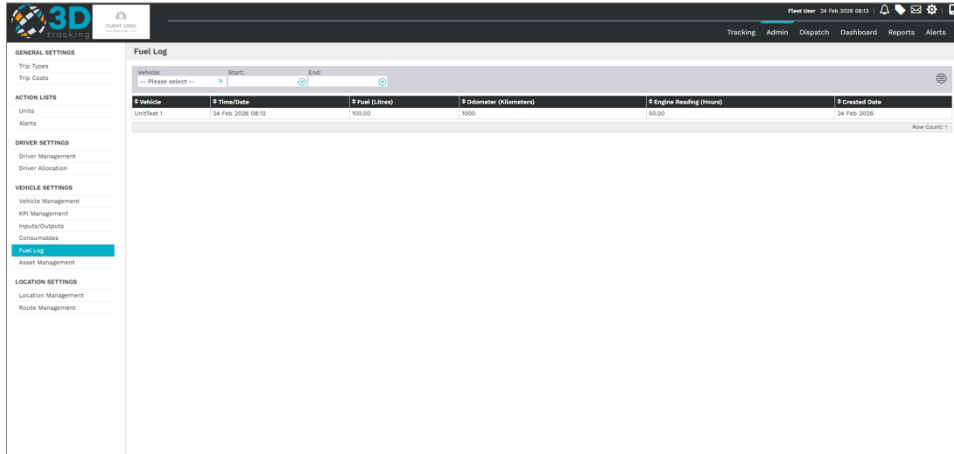


You can manage fuel logs, view cost breakdowns, and spot inconsistencies, all from one **easy-to-use reporting module**.

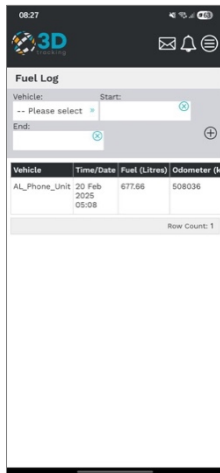
Fuel Log Panel

The **Fuel Log Panel** lets users **record and manage fuel transactions** for individual vehicles.

This supports accurate reporting and builds a reliable audit trail.



Fleet administrators can also upload fuel data **via the mobile app**, allowing for real-time updates and accurate reporting even when on the move.



Key Fuel Reports Explained

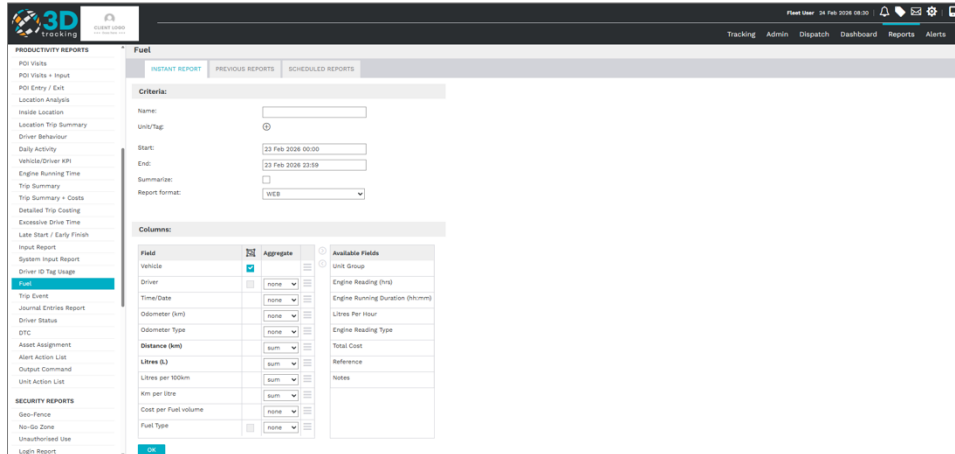
Here are three important fuel reports available in the system:

1. Fuel Report

This report consolidates all **fuel-related entries** across your fleet. It shows:

- **Cost per unit of fuel**

- Total volume of fuel used
- Total cost per vehicle or fleet-wide



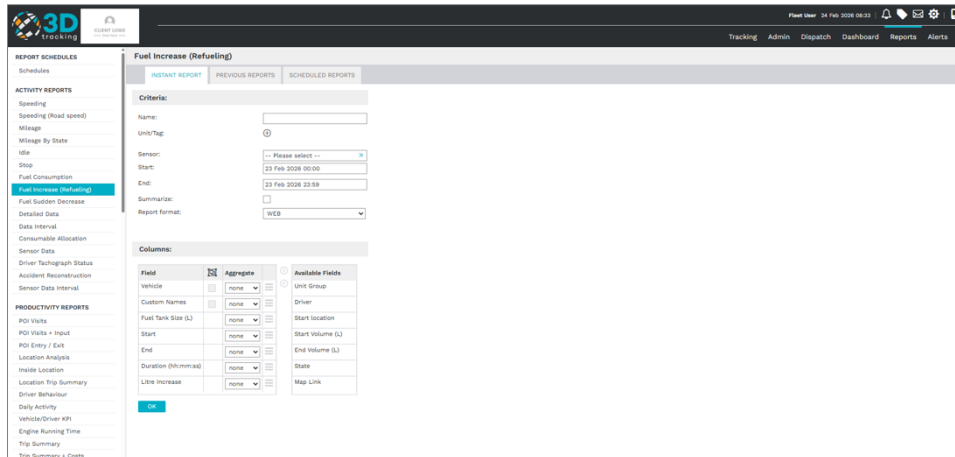
Use this report to **analyze spending, compare usage**, and spot vehicles with higher-than-average fuel consumption.

2. Fuel Increase (Refueling) Report

This report tracks **refueling events**, including when and where they occurred.

You can use it to:

- Verify **fuel receipts**
- Cross-check refueling patterns
- Monitor fuel stops for accuracy

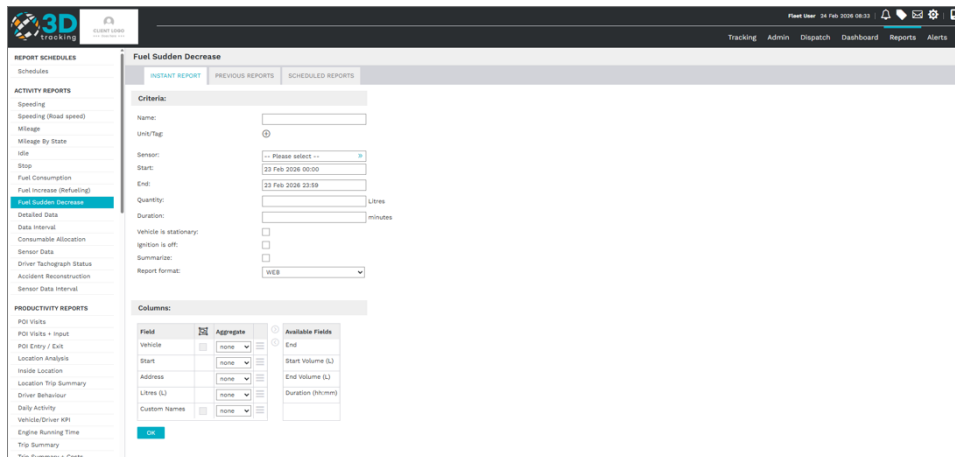


3. Fuel Sudden Decrease Report

This report flags any **sudden or unexplained drops** in fuel levels.

That could indicate:

- **Fuel theft**
- **Fuel leakage**
- Or sensor/device issues

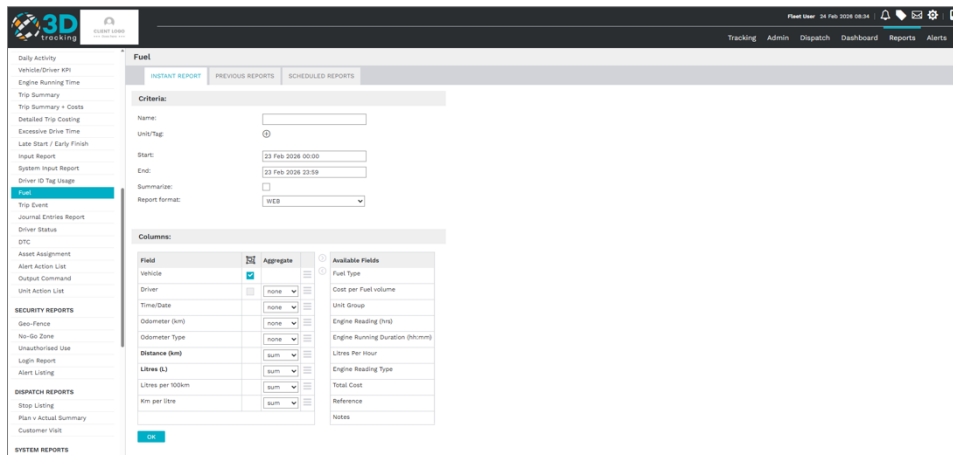


This is an essential report for **improving fuel security** and reducing losses.

How to Add and Run a Fuel Report

All reports follow the same quick and easy process:

- Navigate to the **Reports** tab
- Select the **fuel report type** you want to generate
- Fill in the required fields—such as:
 - Vehicle or group
 - Timeframe
 - Min/Max values or filter settings
- Add or remove fields to **refine your results**
- Click **OK** to generate the report

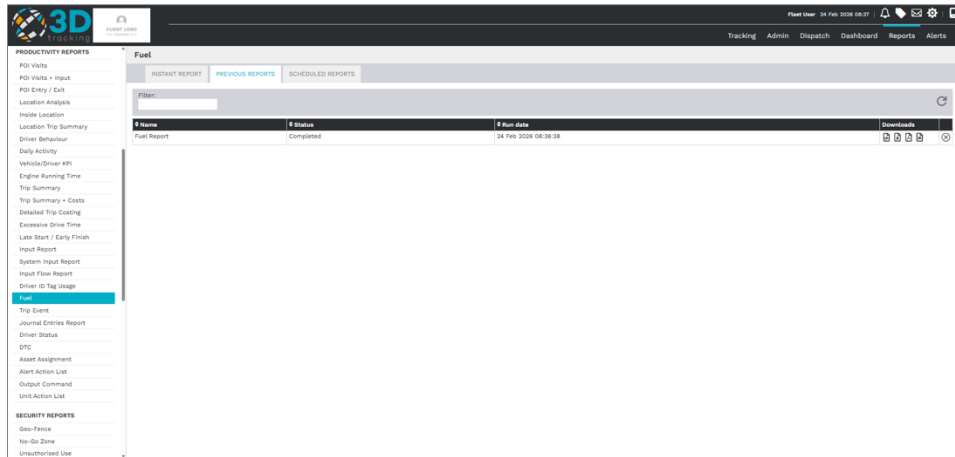


Where to Find Your Reports

Once generated, your report appears under the **Previous Reports** tab.

From here, you can:

- View the report
- Download it in different formats (HTML, PDF, Excel)
- Share or export it as needed



Next Steps

- After reviewing your fuel reports, you can:
- Compare usage trends across drivers or routes
- Adjust refueling schedules or supplier strategies
- Set up **alerts** based on abnormal fuel changes
- Use the data for monthly or quarterly reporting